

Speed · Security · Stability · Simplicity

ER805 Edge Router

· 5G

· SD-WAN

· Cloud-Managed



The InHand ER805 is a versatile networking solution that connects stores and offices to the network through a wide range of 5G/4G cellular or wired broadband to ensure uninterrupted store operations and productivity. Equipped with gigabit Ethernet and gigabit Wi-Fi LAN access, ER805 can support network access to various digital terminals and offer them excellent network performance and high availability. Organizations across multiple industries can rely on the ER805 to deliver secure interconnectivity between branches with SD-WAN technology.



Features and Advantages

● Plug & Play Multifunctional Router

The ER805 edge router provides wired, cellular, and Wi-Fi networking methods, ensuring fast network access and high availability with multiple link-switching strategies.



● Convenient Cellular Access with High-speed 5G

ER805 supports global operator 5G access and both SA and NSA networking modes. With 2Gbps downlink speed, ER805 eliminates business constraints and brings you a high bandwidth and low latency network.



● Comprehensive Security Protection

ER805 helps you gain insights into encrypted traffic with multiple security policies like firewalls, threat identification, and intrusion detection, proactively preventing unpredictable attacks.



● SD-WAN Boosts Fast Branch Interconnection

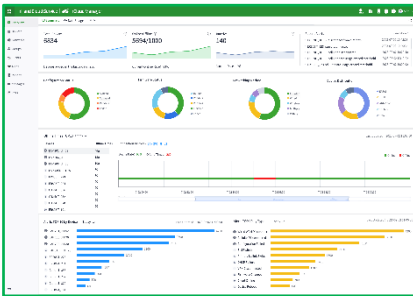
ER805 combined with InCloud Manager can quickly build SD-WAN networking to realize branch interconnection, offering you more flexibility and cost efficiency compared to traditional methods.

● Outstanding Reliability

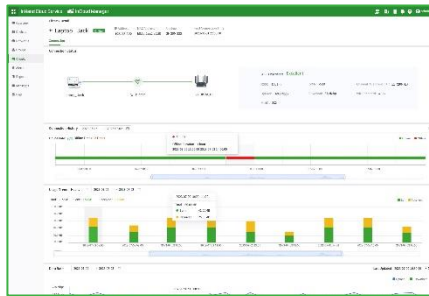
With automatic failover and load balancing, you can easily build redundancy and backup systems to minimize single points of failure for seamless service continuity and minimal downtime.

● Centralized Management for Visualized Insights

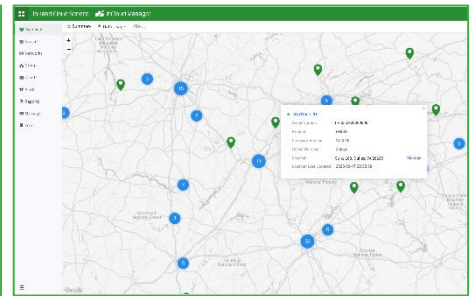
The solution helps you monitor WAN, access, and applications with end-to-end visibility all in InCloud Manager for valuable insights to optimize the network and identify areas for improvement.



Centralized Management

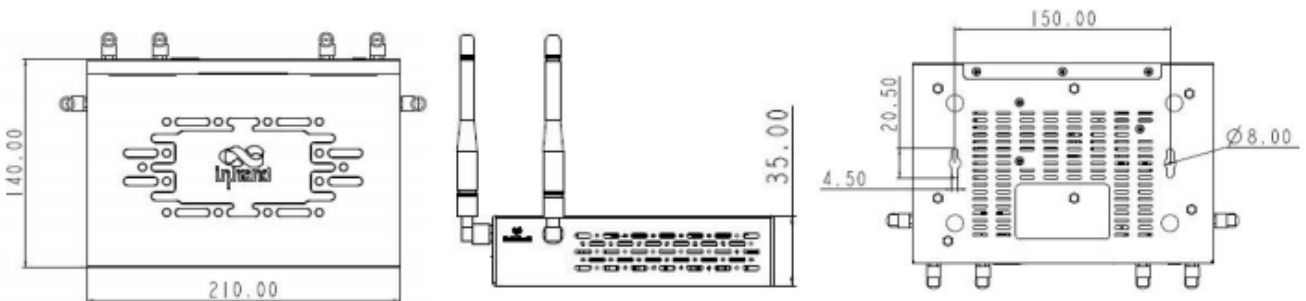


Visualized Monitor



Zero-touch Deployment

Dimensions (mm)



Dimensions: 210 * 140 * 35 (mm)

Product Specifications

ER805 Hardware Specifications

Hardware

Throughput	600Mbps
IPsecVPN Throughput	100Mbps
Recommended No. of Users	100-150
RAM	512 MB
Flash	8 GB

Interfaces

Cellular	5G SA Su-b 6 DL:4.2Gbps UL:450Mbps 5G NSA Sub-6 DL:5.0Gbps UL:650Mbps LTE DL:2.0Gbps UL:200Mbps
Ethernet Port	5*10/100/1000Mbps Ethernet, Supports WAN/LAN switching and dual WAN
Reset Button	Pinhole reset button
SIM Card	Dual-NANO SIM
Antenna Connector	4G: SMA x2; Wi-Fi: RP-SMA x 2 5G: SMA x4; Wi-Fi: RP-SMA x 2

Wi-Fi

Standard	Wi-Fi 802.11a/b/g/n/ac
Maximum Rate	1200 Mbps
Transmission Power	2.4GHz:17dBm 5GHz:17dBm
Antenna Gain	≤5 dBi

Power

Standby Power	2A@12V
Peak Power	≤24W

Environment

Storage Temp	-40 ~ 85°C
Ambient Humidity	5 ~ 95% (non-condensing)
Working Temp	-20 ~ 70°C
IP Level	IP30

Indicator

LED	Power, Network, Signal, Wi-Fi
-----	-------------------------------

EMC

EMC	level 2
-----	---------

Mechanical Specs

Dimensions	210 * 140 * 35(mm)
Weight	1.06 kg
Installation	Bracket mount, wall mount

Certification

CE, FCC, IC, PTCRB, AT&T, Verizon,T-Mobile

ER805 Software Features

Cloud Management

InCloud Manager	Unified device access Zero-touch remote deployment Bulk remote upgrades Configuration deployment SD-WAN networking Connector remote maintenance Two-factor authentication
-----------------	---------------------------------------------------------------------------------------------------------------------------------------------------------------------------------------------

Visualization

Dashboard	Device connectivity status Traffic statistics Cellular signal statistics Interface status Client statistics and analysis
-----------	--------------------------------------------------------------------------------------------------------------------------------------

Uplink Management

Network Access	5G/4G, wired, Wi-Fi
Dialing Services	PPPoE, cellular automatic redial, dual SIM switching, APN configuration
Intelligent Links	Real-time link detection

Network Functions

IP Protocols	IPv4,IPv6
Network Protocols	VLAN,DHCP (Server/Client) , DHCP Snooping, DNS, URL Filtering, DDNS, Fixed Address allocation, IP Passthrough, STP, ARP, ICMP
VPN	IPsec VPN, L2TP VPN , VXLAN , GRE* , Open VPN*
SD-WAN	Support SD-WAN networking
Routing	Static routing, OSPF* , BGP*
Wi-Fi	Supports multiple SSID modes SSID VLAN attributes SSID hiding, guest mode, and custom splash portal Encryption methods: WPA, WPA2, WPA-PSK, WPA2-PSK

Security

Firewall	3L inbound/outbound rules Port forwarding SNAT, DNAT Remote access control Black and white list filtering Domain filtering Portal authentication 802.1 X
----------	-------------------------------------------------------------------------------------------------------------------------------------------------------------------------------

Reliability

Traffic Shaping	QoS based on link, IP, and protocol
Upgrades	Supports scheduled upgrades
Logs	Supports runtime logs, diagnostic logs
Events	Supports user logins, connection disconnects, device reboots, and other operational events
Alarms	Supports local email alarms on the device Supports platform SMS and email alarms
Diagnostic Tools	ICMP, packet capture, tracert

Ordering Guide

Model	Model code: ER805-<WMNN>-<WLAN/NA> <WMNN>: Cellular Type & Module	<WLAN/NA>: Wi-Fi
ER805-NRQ2-<WLAN/NA>	China, 5G 5G NR NSA n41/n78/n79 5G NR SA n1/n28*/n41/n77/n78/n79 LTE-FDD B1/B2/B3/B5/B7/B8/B20/B28 LTE-TDD B34/B38/B39/B40/B41 WCDMA B1/B2/B5/B8	WLAN: Wi-Fi <NA>: no Wi-Fi
ER805-NRQ3-<WLAN/NA>	North America, 5G 5G NR n1/n2/n3/n5/n7/n8/n12/n20/n25/n28/n38/n40/n41/n48*/n66/n71/n77/n78/n79 LTE-FDD B1/B2/B3/B4/B5/B7/B8/B12(B17)/B13/B14/B18/B19/B20/B25/B26/B28/B29/B30/B32/B66/B71 LTE-TDD B34/B38/B39/B40/B41/B42/B43/B48 WCDMA B1/B2/B3/B4/B5/B6/B8/B19	WLAN: Wi-Fi <NA>: no Wi-Fi
ER805-LQ20-<WLAN/NA>	China, CAT4 LTE-FDD B1/B3/B5/B8 LTE-TDD B34/B38/B39/B40/B41 TD-SCDMA B34/B39 WCDMA B1/B8 CDMA BC0 GSM 900/1800MHz	WLAN: Wi-Fi <NA>: no Wi-Fi
ER805-FQ39-<WLAN/NA>	North America, CAT6 LTE-FDD B2/B4/B5/B7/B12/B13/B25/B26/B29/B30/B66 WCDMA B2/B4/B5	WLAN: Wi-Fi <NA>: no Wi-Fi
ER805-FQ58-<WLAN/NA>	EU&APAC, CAT4 LTE-FDD B1/B3/B7/B8/B20/B28A LTE-TDD B38/B40/B41 WCDMA B1/B8	WLAN: Wi-Fi <NA>: no Wi-Fi
ER805-FQ78-<WLAN/NA>	Australia, CAT4 LTE-FDD B1/B3/B7/B8/B20/B28A LTE-TDD B38/B40/B41 WCDMA B1/B8	WLAN: Wi-Fi <NA>: no Wi-Fi
ER805-EN00-<WLAN/NA>	No Module	WLAN: Wi-Fi <NA>: no Wi-Fi

About Us

InHand Networks is a leading IoT solutions provider founded in 2001, dedicated to driving digital transformation across industries and empowering customers to unlock their full potential and achieve accelerated growth.

We specialize in delivering industrial-grade connectivity solutions for diverse sectors, such as enterprise networks, industrial and building IoT, digital energy, smart commerce, and mobility. Our comprehensive product portfolio and services cater to various applications worldwide, including smart manufacturing, smart grid, intelligent transportation, smart retail, etc. With a global footprint spanning over 60 countries, we serve customers in China, the United States, France, Germany, the United Kingdom, Italy, and beyond.



43671 Trade Center Place, Suite 100, Dulles,
VA 20166, USA
T: +1 (703) 348-2988
E: info@inhand.com
www.inhand.com